



The 'Dog Box'
The Origins of Hauraki Plains College



General Information Guide

2017

HAURAKI PLAINS COLLEGE

"EXCELLENCE IS OUR TRADITION"

COMPETENCE

DARING TO
DREAM



FLAT OUT AND
LOVING IT



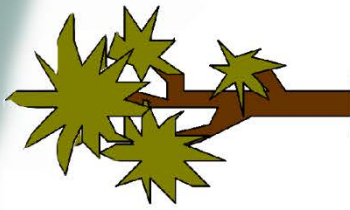
DOING THE
RIGHT THING

BECOMING OUR BEST
SELVES



LEAVING A LEGACY

DOING OUR
BEST WORK



BEING WHO WE ARE



HONOURING OUR HERITAGE

CHARACTER

COMMUNITY



Our Vision: River Charter

The vision and values of Hauraki Plains College are represented in our River charter which uses the enduring features of the Hauraki cultural and environmental landscape to symbolise the aspirations of our young people. The central metaphor, the river flowing out to the widening sea, represents our core purpose: to prepare students for life and work in the 21st century as lifelong and life-wise learners and contributing citizens. Developing character, competencies and a sense of community provide the framework for the aspirations we hold for our young people. Within this framework we endeavour to be guided by the following core values:

We stand for:

- **Doing our Best Work:** Working hard, digging it in when the going gets tough, and not giving up.
- **Doing the Right Thing:** The Hauraki Way challenges us to do the right thing even if it is the hard thing.
- **Flat Out and Loving It:** Giving things a go, getting involved, participating and contributing.
- **Being Who We Are:** Developing one's own talents and aspirations while appreciating the unique talents and interests of others.
- **Leaving a Legacy:** Seeking to make a difference.
- **Daring to Dream:** Going after big goals and pursuing a purposeful career direction, aiming to go higher and further than what we think possible.
- **Honouring our Heritage:** Appreciating our unique identity as Hauraki and as New Zealanders, understanding our place in the world.
- **Each for All:** Our school motto and watermark which permeates everything we do, being and standing together as a school community.
- **Excellence is our Tradition:** Becoming our 'best selves', striving for, challenging and supporting excellence in all we are and do.



Welcome

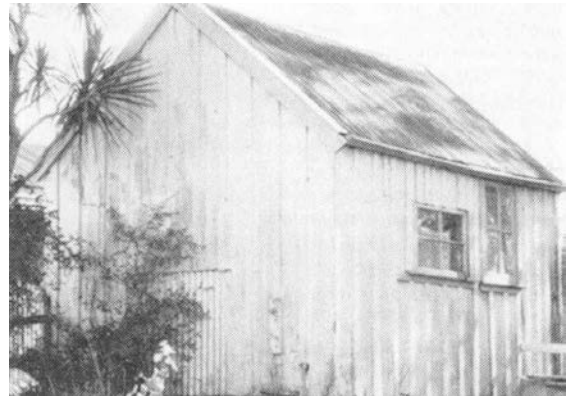
The Origins of Hauraki Plains College

Hauraki Plains College was first founded to meet the educational needs of the local community as the Hauraki Plains was being opened up for farming settlement. The school began as a one room school with fifteen pupils which became known as 'The Dog Box.'

Orchard School grew to Ngatea District High School and then in 1963 was renamed Hauraki Plains College to signal its status as a Year 9 to 13 secondary school. Since then, Hauraki Plains College has continued to evolve and develop to meet the needs of 21st century learners. Well maintained and expansive facilities are sited on a spacious 9.5 hectare site in Ngatea township beside the Piako River.

Most of our 700 students originate from our eleven contributing Primary schools: Ngatea, Turua, Kaihere, Waitakaruru, Kerepehi, Kopuarahi, Kaiaua, Maramarua, Mangatangi, Mangatawhiri and Orere Point. A ballot system operates for students beyond this zone.

Our school motto, *Quisque Pro Omnibus* or 'Each for All' reminds us of the importance of showing respect, taking responsibility and considering others in all we do. Our mission statement *Excellence is our Tradition* speaks of the traditional and timeless values that we stand for and encourages 'best self' and 'best work' for all in our school community.





Learning Opportunities

We believe that every student is capable of learning and achieving success. We expect our students to do their best work and place a significant focus on teaching students how to learn so they can meet the demands of an ever changing and challenging working environment in their future lives. To this end, we offer an extensive range of learning opportunities designed to develop the talents, interests and career pathway of every student.

Year 9 Certificate of Learning:

The Hauraki Plains College Junior Diploma of Learning has earned a Goodman Fielder School of the Year Merit Award.

The Year 9 Certificate of Learning is designed to increase engagement and motivation at Year 9 and support students as they adjust to learning at college. Each term in every subject, students are able to achieve credits which contribute to the Certificate of Learning which is awarded at the end of year at a special awards event. Credits are awarded in each subject under each of the key competencies:

- Understanding languages, symbols and text (subject knowledge and skills)
- Demonstrating thinking
- Managing self
- Relating to others
- Participating and contributing

Additional credits are awarded for co-curricular participation and following the Hauraki Way.

Year 10 Junior Diploma of Learning:

The Year 10 Junior Diploma works in the same way as the Year 9 Certificate. To be awarded the HPC Junior Diploma at the end of Year 10, students must gain 2/3 of available credits. More able students are able to extend themselves by aiming to achieve the Junior Diploma with Merit or Excellence.

Subjects:

At Year 9 level all students take a broad programme including English, Mathematics, Social Studies, Science and Physical Education as well as introductory studies in Technology (Metal, Wood, Fabrics, Food, Computing), The Arts (Art, Music, Drama, Design, Dance), Language and Cultural Studies (Te Reo, Spanish, Pacifica), Health Studies and Financial Studies.

At Year 10, students are given more choice and a greater range of options including Agriculture, Horticulture, Building, Robotics and Engineering. Details of these options are available from the Year 10 Subject Guide.



Senior Pathways and NCEA Qualifications:

Programmes of learning for Years 11, 12 and 13 are based on the National Certificate of Educational Achievement (NCEA) Levels 1, 2 and 3. Courses are structured to encourage students to develop a flexible pathways approach to their learning while keeping their options open for the future. Students can also learn at multiple levels of NCEA.

To help parents and employers better understand NCEA, an app is available for mobile devices – phones and tablets. Called the 'NCEA Guide', the app provides quick and easy access to key information about NCEA.

Full details of the subjects and the prerequisites are outlined in the Senior Subject Information Guides which are given to all students to help with subject selection.

Subjects Offered:

- Accounting
- Agriculture
- Art
- Automotive Engineering
- Biology
- Building and Construction
- Business Studies
- Calculus
- Chemistry
- Childcare
- Classical Studies
- Computing
- Construction and Landscaping
- Communication Studies
- Creative Literature
- Design and Visual Communication
- Drama
- Dance
- Electronics
- Employment Skills
- Engineering
- English
- Film Making
- Forestry
- Furniture
- Geography
- Graphics
- Health Studies
- History
- Horticulture
- Hospitality
- Languages
- Legal Studies
- Maori Cultural Studies
- Mathematics
- Media Studies
- Music
- Photography
- Physical Education
- Physics
- Primary Industries
- Robotics
- Science
- Spanish
- Statistics
- Technology Fabrics
- Technology Food
- Technology Metal
- Technology Wood
- Te Reo Maori
- Tourism

Vocational Pathway Awards:

Students are able to work towards Vocational Pathway Awards relevant to a number of career directions including Primary Industries, Building and Construction, Manufacturing and Technology, Services (e.g. Hospitality), Creative Industries and Social and Community Services.



Learning Support and Extension Programmes:

An extensive Learning Support programme is in place for students who need extra help, particularly in reading, writing and mathematics. More academically able students are provided with a range of opportunities to provide additional challenge including languages, correspondence and university papers.

Correspondence and STAR courses:

A range of courses are offered through the Correspondence school as well as a range of full year and short courses such as first aid, learner driver licence and hair dressing.

Tutorials:

Tutorials are offered throughout the year at lunchtimes or afterschool at no cost. Teachers and senior students are available during these times to provide students with extra help.

Homework:

In order to consolidate learning at school and develop sound work habits, a reasonable amount of homework is expected from students. It is not intended that homework should be burdensome, but to be of value, it must be regular.

Students are required to maintain a homework diary. Often homework is in the form of a long term assignment. Students can best manage these assignments by spending a little time each night working on them.

At Years 9 and 10, students will be required to do approximately 2 – 3 hours per week, extending to 5 or more hours for senior students. Parents are encouraged to contact the Academic Dean if you have a concern about homework.

Subject Selection Advice:

Students are provided with a Subject Selection Guide at Years 10 – 13 and a Subject Selection evening is held prior to students choosing their subjects for the following year.

The Careers Co-ordinator and Academic Dean provide advice and guidance in subject selection at each year level. Parents are encouraged to be part of this process.



Academic Monitoring and Mentoring:

A 'one student at a time' approach is taken with academic tracking, monitoring and mentoring. The Academic Deans regularly check on each student's progress at both junior and senior level and if required, put in place a range of strategies to assist students to meet their learning needs and aspirations.

Gateway (Work Based Learning):

Each year, over 70 students take up the opportunity to explore possible career directions in our Gateway programme. The Gateway programme has been established to provide students with supervised work based learning opportunities appropriate to their interests and strengths. Students are able to experience different work environments and 'real world' learning in an extensive range of industries.

Career Pathway Planning:

The aim of the Career Pathway programme is to encourage and assist students to look beyond school and establish a clear focus and direction for their future lives. The Career Pathway programme is an integrated approach combining mentoring of student academic progress and career planning. Career advice and planning begins at Year 9 and as students move through their senior years, individual career pathway planning is provided for every student.

The Career Pathway programme helps students make informed learning and career decisions, while at the same time develops their planning and decision making skills. The establishment of a clear future direction or pathway by students also makes their time at school more purposeful and worthwhile.

Parents who have questions regarding careers for their child are encouraged to contact the Careers Co-ordinator.

Education outside the Classroom:

We have a comprehensive "Education outside the Classroom" programme which operates from Years 9 to 13.

- Class field trips
- Camping
- Hiking
- Bush craft
- Water sports
- Kayaking
- Sailing
- Rafting
- Leadership training
- Berths available on Spirit of Adventure



Costs and Fees

We endeavour to keep additional costs and fees at a level which is mindful of the financial resources of families. To help families, an automatic payment arrangement can be put in place which allows for gradual repayments of costs such as uniform, stationery and subject fees up to the value of \$750. Repayments must be set at a rate which will clear accounts by the end of each year. A deposit of 10% is required.

School Activity Donation:

The School Activity donation is \$100 per pupil, or \$150 for two or more pupils in the family. This covers part of the cost of the school magazine, sporting equipment, fare subsidies, visiting performance groups and other opportunities not covered by to Ministry funding.

Stationery and Textbooks:

The College has a Stationery Shop which provides quality stationery at competitive prices. All pupils new to the College are required to pay a once-only textbook deposit of \$20, this is refundable upon leaving school. Pupils must pay for any loan books lost, destroyed or damaged.

Specific Subject Fees:

The school has a responsibility to offer programmes which provide a wide range of experiences and also satisfy national course requirements. We endeavour to do this while keeping subject fees as low as possible. Fees and costs for each subject is provided in the Subject Information Guides.

NZQA Fees:

These are collected on behalf of NZQA (NZ Qualifications Authority) for senior students doing NCEA. They are normally due to be paid by mid-September.

Sports Fees and Costs:

Students participating in co-curricular sporting codes and teams are likely to have fees and costs associated with this. Sports fees are made known through the school newsletter and must be paid at the beginning of the sports season.



Uniform

We offer a smart, reasonably priced uniform. The College expects students to maintain a high standard of dress and personal presentation at all times, including a clean, tidy uniform. It is a condition of attendance at this College (agreed to upon enrolment) that the correct uniform be worn. Non-regulation items will be held in safe-keeping until the end of term. Individual variations require the approval of the Principal. Any changes to our uniform code must be passed through the Board of Trustees and will be notified in newsletters.

During the summer months, students are encouraged to wear the College uniform sunhat (no other sunhats, sports hats or beanies are acceptable). Girls are reminded that skirts should be an appropriate length and no shorter than midway between ankle and knee. Information regarding skirt length and requirement, care of skirts and other information is given when purchasing skirts.

Hair must be clean, neat and tidy and be styled in a reasonably conventional way including natural hair colourings. It is expected that hair be kept out of students' eyes and long hair be tied back at all times. Boys are expected to be clean-shaven. Girls are permitted to wear natural looking make up only.

The only jewellery students may wear is one plain silver or gold stud in each ear. Nose or other facial studs are not permitted including clear studs and space savers. Students may be permitted to wear a pendant / taonga or tattoo if it has significant spiritual, cultural or sentimental value. The taonga or tattoo must not be visible.

The standard Hauraki Plains College uniform jacket is the only jacket allowed and is for outdoor use only. Passes will not be issued for any other jackets. For additional warmth in winter it is recommended that all students wear extra items of clothing under their uniform. These extra garments, however, should be white or black depending on colour of the shirt and must not be visible. An optional Hauraki Plains College raincoat is available for use during rainy weather only.



Uniform Items:

All items such as girls skirts and boys trousers are of a particular style and colour and must be that available through our uniform supplier shop. Substitute items are not permitted.

JUNIOR GIRLS UNIFORM		YEARS 9, 10, 11
SUMMER	WINTER	
<ol style="list-style-type: none"> 1. HPC checked skirt (year round use) 2. White short-sleeved shirt with HPC monogram and black tie 3. Black roman sandals (standard school-type only) 4. Red HPC jersey 5. Black HPC regulation sunhat for outdoor summer activities. No other hats acceptable. (summer months only) 6. HPC black jacket (for outside use only) 	<ol style="list-style-type: none"> 1. HPC checked skirt (year round use) 2. White short-sleeved shirt with HPC monogram and black tie 3. Black leather lace-up standard / regular school shoes. Low heeled (must have distinct heel), maximum 5 cm, no sports shoes 4. Black pantyhose 5. Red HPC jersey 6. Black and white HPC scarf (optional). No other scarves acceptable. 7. Plain black woollen gloves are permissible 8. HPC jacket (for outside use only) 	
SENIOR GIRLS UNIFORM		YEARS 12,13
SUMMER	WINTER	
<ol style="list-style-type: none"> 1. HPC grey skirt (year round use) 2. Grey striped short-sleeved shirt with HPC monogram and black tie 3. Black HPC jersey 4. Black Roman sandals (standard school-type only) 5. Black HPC blazer (optional) 6. HPC jacket (for outside use only) 7. Black HPC regulation sunhat for outdoor summer activities. No other hats acceptable. (Summer months only) 	<ol style="list-style-type: none"> 1. HPC grey skirt (year round use) 2. Grey striped short-sleeved shirt with HPC monogram and black tie 3. Black HPC jersey 4. Black leather lace-up standard / regular school shoes. Low heeled (must have distinct heel), maximum 5 cm, no sports shoes 5. Black pantyhose 6. Black HPC blazer (optional) 7. HPC jacket (for outside use only) 8. Black and white HPC scarf (optional). No other scarves acceptable 9. Plain black woollen gloves are permissible 	

PE

All boys & girls

- Hapu T-shirt of a specific colour
- Plain black sports shorts (not touch shorts)
- Suitable footwear (sports, running or court shoes)
- HPC track pants are optional in winter



JUNIOR BOYS UNIFORM		YEARS 9, 10, 11
SUMMER	WINTER	
<ol style="list-style-type: none"> 1. Black short-sleeved polo shirt with HPC monogram 2. Grey HPC shorts 3. Black roman sandals (standard school-type only) 4. Grey HPC jersey 5. Black HPC regulation sun cap for outdoor summer sporting activities. No other hats acceptable (summer months only) 6. HPC jacket (for outside use only) 	<ol style="list-style-type: none"> 1. Black short-sleeved polo shirt with HPC monogram 2. Grey HPC shorts, or long grey trousers (optional) 3. Grey HPC jersey 4. Black leather lace-up standard / regular school shoes. Low heeled (must have distinct heel), maximum 5 cm, no sports shoes 5. Long grey socks (standard HPC uniform only) 6. HPC scarf 7. Plain black woollen gloves are permissible 8. HPC jacket (for outside use only) 	
SENIOR BOYS UNIFORM		YEARS 12, 13
SUMMER	WINTER	
<ol style="list-style-type: none"> 1. Grey striped shirt with HPC monogram 2. Grey HPC shorts 3. Black HPC jersey 4. Black roman sandals (standard school-type only) 5. Black HPC regulation sun cap for outdoor summer sporting activities. No other hats acceptable (summer months only) 6. Black HPC blazer (optional) 7. HPC jacket (for outside use only) 	<ol style="list-style-type: none"> 1. Grey striped shirt with HPC monogram 2. Grey HPC shorts, or long grey trousers (optional) 3. HPC tie, worn with long trousers (shirt must be tucked in) 4. Black leather lace-up standard / regular school shoes. Low heeled (must have distinct heel), maximum 5 cm, no sports shoes 5. Long grey socks (standard HPC uniform only) 6. Black HPC jersey 7. Black HPC blazer (optional) 8. HPC scarf (optional). No other scarves acceptable 9. Plain black woollen gloves are permissible 10. HPC jacket (for outside use only) 	

NUMBER ONE DRESS UNIFORM ('number ones'):

'Number ones' are worn whenever students represent the College, including sports and cultural events and formal occasions such as prizegivings. 'Number ones' may be hired through the Hub.

BOYS: Long grey trousers, long sleeved white shirt, college tie, college blazer (not jacket), black standard school shoes

GIRLS: Senior skirt, college girls blouse, college blazer (not jacket), black standard school shoes.

All team uniforms must be approved by the Principal. We endeavour to keep additional costs to a minimum, making maximum use of college standard uniform items.

Note: any changes to the school uniform must be approved by the Board of Trustees and communicated via newsletter and HPC Facebook page.



School Routines

The following is intended as useful information for parents and students. Any suggestions as to how our school practices could better meet the needs of parents and students are always welcome.

The School Day:

Students are required to be at school by 8:40 am and the final bell rings at 3:20 pm. On a normal school day, lessons and break times are as follows:

	Mon	Wed	Tues, Thu & Fri
Assembly / (Extended) River Group	8:40 – 9:00	8:40 – 9:10	8:40 – 8:55
Period 1	9:05 – 10:00	9:15 – 10:15	8:55 – 9:55
Period 2	10:05 – 11:00	10:20 – 11:20	10:00 – 11:00
Interval	11:00 – 11:25	11:20 – 11:45	11:00 – 11:25
Period 3	11:25 – 12:25	11:45 – 12:45	11:25 – 12:25
Period 4	12:30 – 1:30	12:45 – 1:30	12:30 – 1:30
Lunch	1:30 – 2:20	1:30 – 2:20	1:30 – 2:20
Period 5	2:25 – 3:20	2:25 – 3:20	2:25 – 3:20

Attendance:

A young person is required by law to attend school every day on which the school is open until the age of 16 years is reached. A 90% attendance rate is required to achieve the Junior Certificate of Learning, the Junior Diploma of Learning and for Senior Graduation. Absence for ill health, medical or dental appointments and family bereavements require an explanation from parents / caregivers. We appreciate parents phoning in and leaving a message on any day your child is absent. Parents can also communicate an absence via the school app. Absence for matters outside the above, especially extended absences require the principal to be informed. Please be aware that in most cases, the Ministry deem absences, such as family holidays, to be unjustified.



Passes Out of School:

For safety reasons, it is essential that the school knows the whereabouts of pupils at all times during the school day. Pupils who need to leave the school grounds for any reason during the school day need a Street Pass. This is issued by the Duty Dean and requires a written note from home. Street passes are not issued to buy lunch or food downtown.

Students are not permitted to go home or visit the homes of friends during interval or lunchtimes.

Illness at School:

A sickbay facility caters for pupils suffering injury or who are temporarily unwell. Children who are clearly unwell at home should not be sent to school. Staff trained in First Aid are on hand to deal with most minor injuries and illness. In more serious or urgent matters, pupils will be referred to the Health Centre in Ngatea and the College will make every effort to contact parents / caregivers or the emergency contact number. To assist in this, it is essential that an emergency contact phone number is given to the College on enrolment.

Pupils who become unwell during the school day will be directed to the sick bay and in most cases, parents / caregivers or the emergency contact will be contacted for the student to be collected and taken home. Parental consent is required for pain relief medication to be issued.

Bus Travel:

To be eligible to travel on school buses, students must live more than 4.8 kilometres from the college. Information leaflets for each bus route are available from the College office and website. Pupils are expected to be at their pick-up point at least 10 minutes prior to the suggested pick-up time.

Notes are required from parents on the preceding day, if for any reason, pupils wish to travel on a different bus. The Bus Controller and Bus Company have ultimate authority on whether a pupil may travel on a different bus and the note requesting permission must be signed by both.

Because the safety of so many people is involved, strict standards of behaviour are enforced on school buses. Students need to be mindful that they may lose the right to travel on a school bus if behaviour is unacceptable. Any queries regarding school transport should be directed to the Bus Controller at the college.



Students Bringing Vehicles to School:

The safety of students is our first consideration and students are not encouraged to bring vehicles to school. If it is necessary to do so, students need to complete a Vehicle Permit form from the Student Centre requesting permission to do so. Student and parent responsibilities are outlined on this form.

Picking Up Students During School Hours:

Parents calling for students during the school day must arrange to pick them up at the Student Centre.

Use of Cell Phones:

Cell phones may also be used for learning purposes only under the direct supervision of a teacher. Please refer to Technology Zones. It is acknowledged that for reasons of safety and / or convenience, parents may wish their child to have a cell phone at school for personal reasons e.g. to phone home when after school sports practice is finished. If it is necessary for a cell phone to be brought to school, it must be turned off at all times and out of sight, unless the student has permission to use it for learning purposes. If a student is found to be using a cell phone during the school day, the cell phone will be removed for safe keeping and returned to the parent or to the student after 7 days.

Parents are welcome to communicate with your child during the school day by phoning the college office. We are happy to pass messages on to students. If the need to use a cell phone arises during school hours, the student must report to the office or student centre to make the call.

The school takes no responsibility for the theft of a cell phone or other personal technology devices at school.

Photos of Students:

We like to celebrate the successes of students as well as share with our school community the many and varied activities of our students. For this reason, photos of students are published in school newsletters, in the Plains Profile, Hauraki Herald and other publications. We require the consent of parents / students to use photos for this purpose. Please refer to the enrolment form.



Self-Discipline in a Caring Community

The Hauraki Way:

We believe that learning happens best in an environment which is orderly and has clearly established expectations for student behaviour. The Hauraki Way establishes clear boundaries for students and students are encouraged to be self-disciplined and take responsibility for their own behaviour.

As part of the enrolment process, students are expected to read and agree to the Hauraki Way. This includes times and places outside of the school grounds or school hours when students can clearly be identified as a student of this school.

- H Hands off other people and their property
 - A Arrive on time and ready to learn
 - U Use appropriate language at all times
 - R Respect each other. Respect our school
 - A Alcohol, smoking and drugs are not permitted
 - K Keep in the school grounds
 - I Instructions must be followed; teachers are in charge
-
- W Wear our uniform with pride
 - A Always let others learn
 - Y You are responsible for your own actions

We take a firm stand on any behaviour which compromises the safety and effective learning of other students, including disruptive behaviour in the classroom, disrespect to teachers and aggressive behaviour such as bullying or fighting.

At the same time, students are given considerable support to make positive behavioural change. We encourage students to put things right if there has been an instance of misconduct and to accept the consequences of their actions. Restorative and strength based practices are an important part of the way we work.



Hauraki Plains College Information Technology Use:

Hauraki Plains College strives to offer all students' access to a range of ICT-related resources and courses. The College allows students access to the Internet, as well as to a constantly expanding Intranet system including a specifically designed HPC app.

Students are encouraged to bring their own technology device.

Every effort is made to screen or filter out controversial, inappropriate or offensive material and regular monitoring occurs to ensure that students are using information technology resources in an appropriate manner related to their learning. It is, however, impossible to guarantee full time supervision of every single student and students are required to be responsible in IT use including not accessing or distributing inappropriate materials in any form.

Student Information Technology Agreement:

Students and their caregivers are required to use digital technologies in an appropriate and legal manner and for learning purposes. Using digital technologies wisely involves:

- Respecting self: Using online names and language that is appropriate. Being careful about posting personal information.
- Protecting self: Being careful about posting personal information, not sharing passwords.
- Respecting others: Not using electronic means to bully, harass, stalk or shame others.
- Protecting others: Reporting abuse, not forwarding inappropriate or unkind materials.
- Respecting intellectual property: Giving credit where it is due, asking permission to use materials.
- Protecting school property: Taking care with all electronic and digital equipment.

Technology Zones:

We believe that digital technologies enhance learning for students. At the same time, it is important that young people develop positive face to face relationships. For this purpose, a "technology zoning" system is in place:

- Green zone: all devices acceptable (e.g. cell phones, Chromebook)
- Amber zone: restricted use of devices (e.g. Chromebook only)
- Red Zone: no technology (e.g. interval and lunchtimes)



Code of Conduct for Co-curricular Activities:

Members of Hauraki Plains College sports and cultural teams are representing our school and therefore have the responsibility to role model the highest standards of conduct in terms of behaviour, show respect and take personal responsibility at all times. Senior and number one teams in particular are role models and set the tone for the rest of the school.

Student Code of Conduct for Co-curricular Activities:

Students are required to read and agree to the following before signing the enrolment form.

At our school we agree to:

Have fun and remember the Hauraki Way applies at all times

Arrive on time and ready to go

Use appropriate language at all times

Respect the opposition as well as each other

Alcohol, smoking, drugs and harassment are not on

Keep within the rules; play hard but play fair

Instructions of the coach, manager and referee must be followed; they are in charge

Wear our team uniform with pride

And

You are expected to be a good sport, i.e. a gracious winner and dignified loser

Note that students may be stood down from a team or performance through:

- Unsatisfactory attendance (below 90%).
- Ongoing behavioural concerns at school.
- Serious discipline breach which results in stand down or suspension.
- Lack of commitment and progress in classroom learning.



Health and Guidance Services

Hauraki Plains College offers extensive health and pastoral care services for students.

Guidance and Counselling:

The guidance network, including Guidance Counsellor, Deans and River guides, ensures that every student has access to pastoral support. The Guidance Counsellor is available to provide confidential support for students who have issues and concerns of a personal nature.

Drug and Alcohol counselling is available on site from a CareNZ Drug and Alcohol counsellor. For those who require more specialist support, students have access to an extensive range of external agencies through the Guidance Counsellor.

Parents are encouraged to contact the Guidance Counsellor if you wish to discuss an issue regarding your child.

Free Medical Services:

A free medical service is available to students on site for an hour each Tuesday. All students have access to this service. A Public Health Nurse also is available at this time. Students are required to make appointments through the Student Centre.

Home – School Partnerships

Parent Forum:

A Parent Forum takes place each term and provides an opportunity for parents and whanau to meet with the Principal, staff and BOT. Each parent forum has a specific focus, for example:

- Year 9 Meet and Greet
- Year 11 NCEA Information Evening
- Learning about college strategic direction and initiatives
- Discussion about issues or concerns by parents / whanau
- Feedback on college practices and policies



Student Council:

The Student Council is made up of elected representatives from each River group. The Student Council encourages students to discuss issues and provide feedback to the Principal and Boards of Trustees.

Sports Executive:

The Sports Executive has three main tasks:

1. Promote student participation in co-curricular sports
2. Decide direction and policy related to sports
3. Enhance sporting opportunities and achievement at HPC

Whanau PATH (Planning Alternative Tomorrow with Hope):

Each term, whanau are encouraged to meet informally to celebrate successes, learn about and discuss challenges and opportunities in a collaborative face-to-face setting.

Haurakian Charitable Trust:

The Haurakian Charitable Trust has been established to support the continuing development of the college by providing cultural, recreational and educational opportunities and resources. To date the Trust has purchased a farm, built the Centennial Centre, purchased the Lodge as a performing art space, as well as assisting with financial contributions to the college.

Haurakians:

The Haurakians exists to keep past pupils, staff and community connected to the college. Regular newsletters ensures up to date information is available.

Snow Douglas Trust Fund Scholarships:

The Snow Douglas Trust is available for students to apply for support for developing sporting, cultural, academic and service at Hauraki Plains College.



Where to Go? Who to See?

River Guides:

River guides are the 'significant adult' for each child. The river guide takes an interest in each student and supports them in their learning journey through college. Parents will have an opportunity to meet with River guides at the parent meetings held throughout the year. Email addresses for River guides are available on the school's website.

Deans:

Deans have overall pastoral responsibility for students at their year level. If you have an overall pastoral concern please email:

Year 9 Dean	Mr Green	stug@aurakiplains.school.nz
Year 10 Dean	Mr Davies	markd@aurakiplains.school.nz
Year 11 Dean	Mr Joynes	nickj@aurakiplains.school.nz
Year 12 Dean	Mrs Brewer	tonib@aurakiplains.school.nz
	Mrs Smith	jos@aurakiplains.school.nz
Year 13 Dean	Mrs Casey	denisec@aurakiplains.school.nz

Leaders of Curriculum and Learning (LOCALS):

LOCALs have responsibility for learning in a specialist learning area. If you have a specific concern about your student's progress in a class please email:

Arts	Mr O'Neill	jonathano@aurakiplains.school.nz
Business Studies	Mr Tate	johnt@aurakiplains.school.nz
English	Mr Hurley	robh@aurakiplains.school.nz
Health and PE	Mr Casey	peterc@aurakiplains.school.nz
Mathematics	Mrs Casey	denisec@aurakiplains.school.nz
Primary Industries	Mrs Dyer	bronwynd@aurakiplains.school.nz
Sciences	Mr Goodwin	davidg@aurakiplains.school.nz
Social Sciences	Mrs Courtney	miriamc@aurakiplains.school.nz
Technologies	Mr Chivers	shanec@aurakiplains.school.nz



Academic Deans:

Academic Deans have responsibility for monitoring the academic progress of each student towards Junior Certificate, Junior Diploma or NCEA. If you have a general concern regarding a student's academic progress email:

Academic Deans	Mrs Benns	lynetteb@haurakiplains.school.nz
	Mrs Carter	joyc@haurakiplains.school.nz

Careers:

The Careers team ensures that each student has a career plan in place and co-ordinated work place and transition programmes.

Careers Co-ordinator	Mr Keith	peterk@haurakiplains.school.nz
Careers Support	Mrs Carter	joyc@haurakiplains.school.nz
	Mrs Douglas	aliced@haurakiplains.school.nz

Guidance Counsellor:

Co-ordinates the guidance and support network and provides guidance and counselling for students and also works with parents if requested.

Contact	Mr Scott Henry	scotth@haurakiplains.school.nz
---------	----------------	--

Learning Support Co-ordinator (SENCO):

Co-ordinates learning support for Special Needs and others requiring additional learning support.

Contact	Whaea Nicky Farrant	nickyf@haurakiplains.school.nz
---------	---------------------	--

Sports Co-ordinator:

Co-ordinates sporting opportunities.

Contact	Mrs Cindy Berridge	sport@haurakiplains.school.nz
---------	--------------------	--



Arts Co-ordinator / International Students:

Co-ordinates cultural arts opportunities and International students.

Contact	Mrs Trish Smith	international@haurakiplains.school.nz
	Mr Donald Beer	donaldb@haurakiplains.school.nz

Bus Controller:

Overall responsibility for bus organisation.

Contact	Ms Michelle Isbister	michellei@haurakiplains.school.nz
---------	----------------------	--

NZQA Liaison:

Responsibility for NCEA administration.

Contact	Mr Jaco Dreyer	jacod@haurakiplains.school.nz
---------	----------------	--

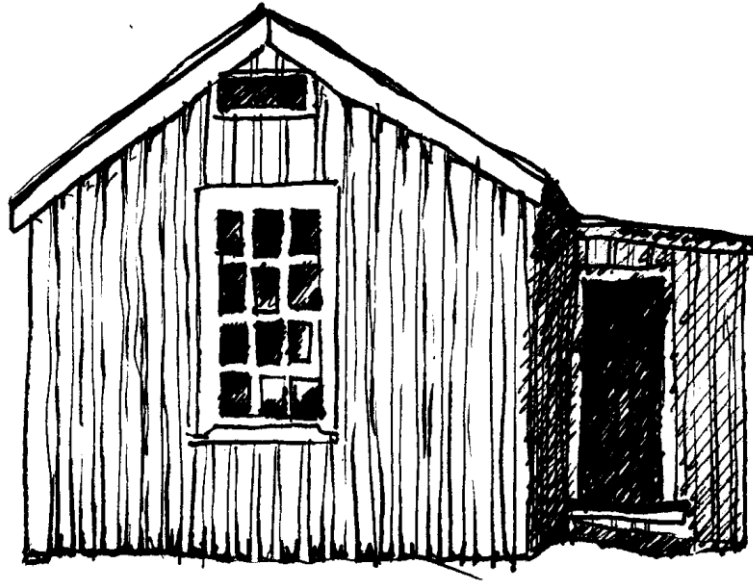
Senior Leadership Team:

Ms Stephanie Harford	(Deputy Principal Junior School)	stephanieh@haurakiplains.school.nz
Mr Jaco Dreyer	(Deputy Principal Senior School)	jacod@haurakiplains.school.nz
Mrs Ngaire Harris	(Principal)	principal@haurakiplains.school.nz

The information in this guide is up-to-date as at the time of printing.

Variations may occur at any time after this date.

Parents / Caregivers will be notified in the school newsletter.



The 'Dog Box'
The Origins of Hauraki Plains College

Hauraki Plains College
2 Kaihere Road
PO Box 44
Ngatea
New Zealand

Phone: (64) 07 867 7029 Fax: (64) 07 867 7020
Email: studentservices@haurakiplains.school.nz
Website: www.haurakiplains.school.nz